

Jewellery for your pool

LUXSA®

Schwimmbad Armaturen

luxsa.ch | Gewerbestrasse 17 | CH-8737 Gommiswald | +41 (0)55 280 13 54



The Skimmer Supra enables a water level of up to 20 mm under the pool surround.

Design and technology on the same wavelength

With LUXSA® swimming pool fittings, nothing stands in the way of your swimming fun.

The high standards of aesthetics, quality, functionality and safety are reflected in the design, materials, quality, manufacture and assembly system. These high-quality products are developed and produced in Switzerland and come with a lifetime guarantee.

LUXSA® swimming pool fittings combine design and technology for ease and a pure zest for life.



Supra stainless steel skimmer with a lifetime guarantee

A refreshing different take on consistency

The product range impresses with its quality, sleek look and stylish details.

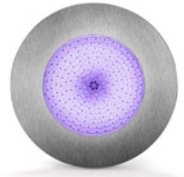
With elegant restraint, LUXSA® swimming pool fittings blend elegantly into the design of your pool and create almost seamless transitions.

Floor drain, suction grid, jet and inlet nozzle, piezo button

Whether exposed concrete, panel or film lining, wood, polystyrene or formwork stone pools: all installation parts are available for the various pool types in a consistent design made of high-quality stainless steel.

Spots and Headlights (LED)

The right lighting makes your pool shine. LUXSA® spots and headlights consist of 100 % watertight LED boards and enable over 16 different colour settings. The LED headlights are also DMX-ready for personalised colour mixing.



LUXSA® headlights in the Q-Line and R-Line designs



LED headlights

Uniqueness swims against the tide

The built-in parts find their balance in the proportions.

The appealing look is not only due to the elegant refinements, but also to the golden ratio, according to which the fittings were designed.

Skimmer

The LUXSA® skimmer in a matching design allows a high water level up to 20 mm below the edge of the pool. Thanks to the stainless steel holder for the electronic level regulator, the water level can be easily adjusted.

Counter-current system

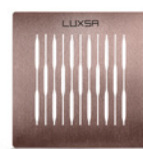
Bring the power of nature into your swimming pool. Similar to a river current, the body is carried in the water. The wide water jet does not splash and avoids unpleasant pressure points on the head or shoulders.

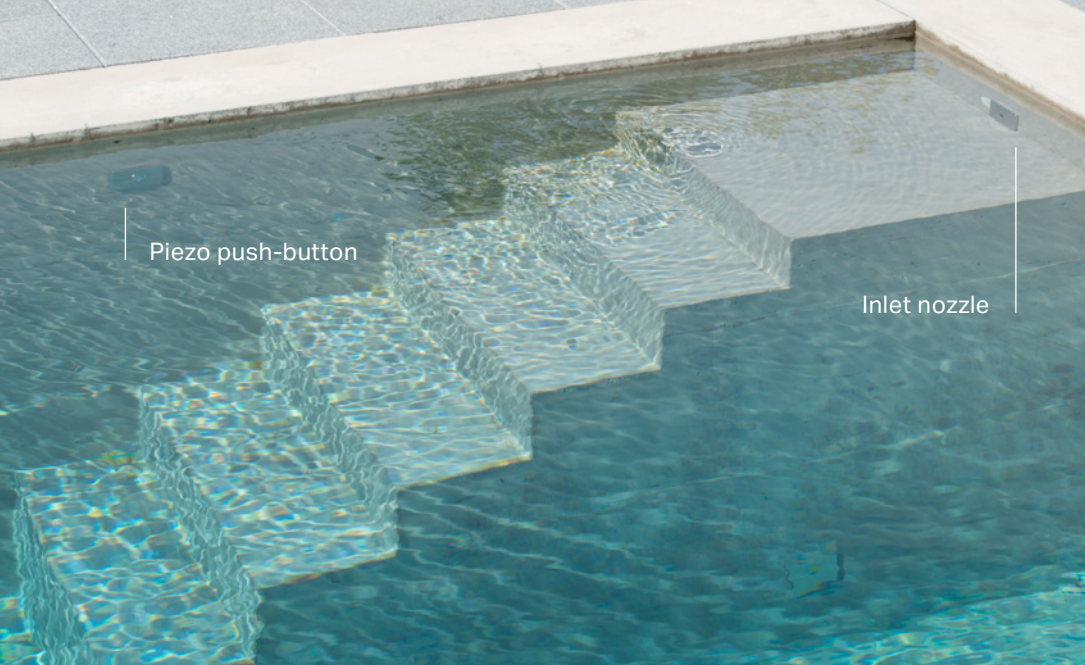


Q-Line jet nozzle in line with the golden ratio

LUXSA® Color

Our high-quality covers are now not only available in classic natural chrome steel, but also in six other colour variants: Gold, copper, bronze, black, anthracite-blue and anthracite-red. Thanks to the PVD coating, they are corrosion-resistant, scratch-resistant, easy to clean and UV-stable.





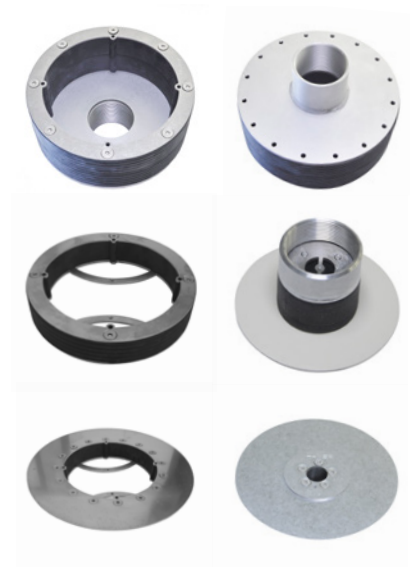
Functionality meets ease

The secret lies in the fastening without visible screws.

Aesthetics are one thing - but safety, simplicity and functionality are at least equally important.

Press & Fix system

The patented Press & Fix system withstands a pressure of up to 5 bar and was developed for LUXSA® swimming pool fittings. The basic nozzle element is inserted into the internal thread of the pool wall feed-through and tightened with four screws. The visible covers are attached to the base unit without screws.

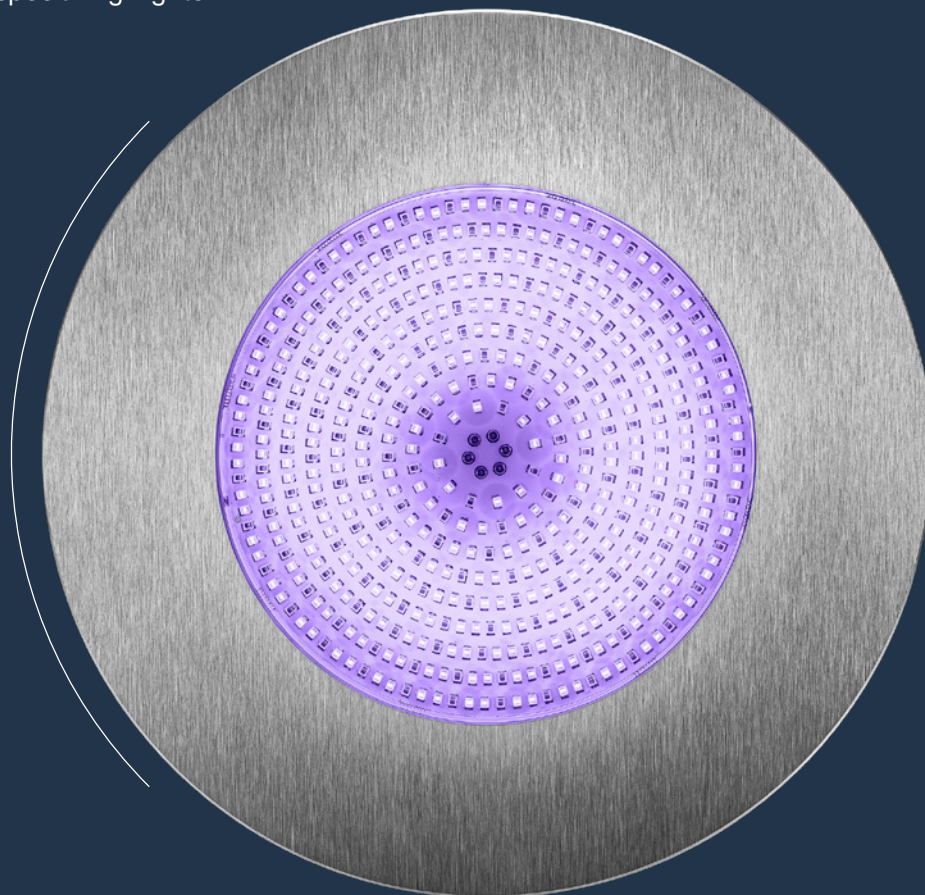


Easy installation of all LUXSA® fittings thanks to the Press & Fix system



LUXSA® R-Line

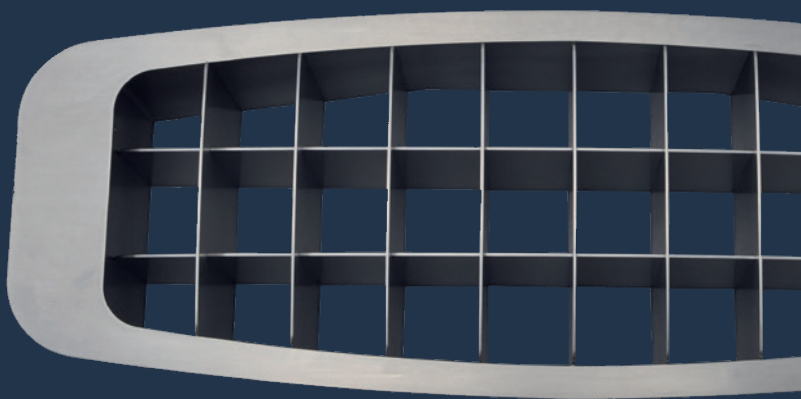
Round, without corners and edges and in high-quality stainless steel, it is not only the LED headlights of the R-Line that provide special highlights.



LED headlights

LUXSA® Individual Line

In addition to the Q-Line and R-Line, a customised design of the swimming pool fittings is also possible.



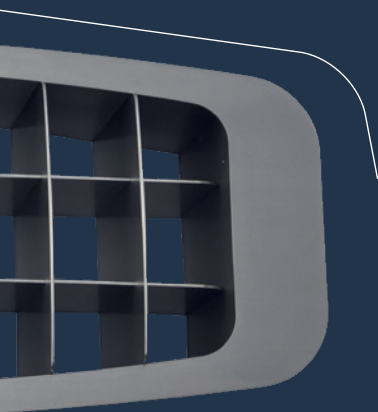
Maxima turbine housing



LUXSA® Q-Line

Square, modern and unobtrusive, the jet nozzle and other fittings in the Q-Line set elegant accents in line with the golden ratio.

Our key features



Efficient water flow



Lifetime guarantee



Patented Press & Fix system



Golden ratio



Swiss production



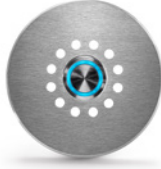
R-Line inlet nozzle



R-Line floor drain



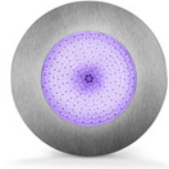
R-Line suction grid



R-Line piezo push-button



R-Line LED spot



R-Line Power LED headlights



R-Line JET nozzle



R-Line water testing



R-Line floor nozzle



Q-Line inlet nozzle



Q-Line floor drain



Q-Line suction grid



Q-Line piezo push-button



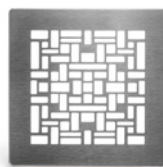
Q-Line LED spot



Q-Line power LED headlights



Q-Line JET nozzle



Q-Line water testing



Skimmer Supra