

LUXSA® presents the innovative Press & Close cable seal for swimming pools

LUXSA®, the expert for swimming pool fittings, produces the first cable seal that is 100 per cent leak-proof. It is called a Press & Close seal and is much easier to install than conventional screw fittings.

Problem

Cable glands are a major challenge in the construction of swimming pools. Most conventional cable glands do not seal tightly or become permeable over time.

The fact that modern skimmers allow a high water level exacerbates the problem. The electrical conduits are located just above or below the waterline. This means that there is a risk of water leaking from the pool into the electrical conduits and, in the worst case scenario, into the cellar.

Another problem is the installation of headlights. The cable is normally threaded through the cable gland so that it can be pulled in. This is often forgotten and the cable has to be pulled out again. In addition, threading is difficult because the opening is small and it is difficult to tighten the cable gland firmly with an open-end spanner, especially with smaller installation housings.

The Press & Close system solves these problems. The innovative cable seals not only provide reliable protection against water, but also make it easier to pull in cables.



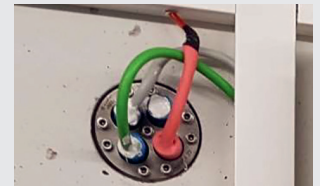
Cable gland forgotten



Cable gland not sealed



Threading in the cable gland

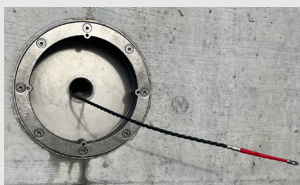


Water ingress in the plant room

Solution

The Press & Close cable seals from LUXSA® consist of insert elements that are 100 per cent watertight. They are available to fit the internal threads with diameters of 1.5 inch, 2 inches and 2.5 inches. Installation of the LUXSA® insert elements is very simple: The cable is

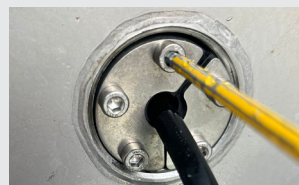
pulled through the large opening, then the Press & Close cable seal is fitted and the element is tightened in the end using a cordless screwdriver or Allen key.



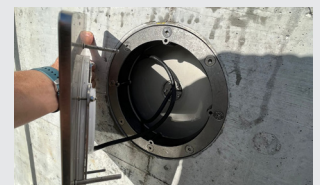
Cable feed with large opening



Place the Press & Close element after feeding in



Tighten the Press & Close element



Cover can be fitted

Press & Close system

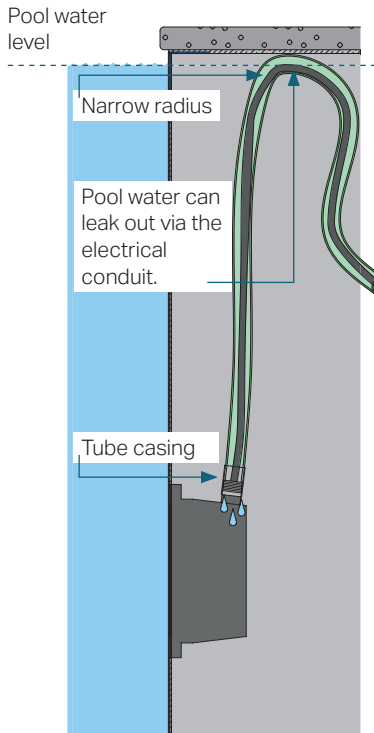
The secret of the Press & Close cable seal is a press ring (ring space seal) that tightly encloses and seals the cable. This principle has been tried and tested for decades in house infeeds. The Press & Close system is the first time this technology has been used for swimming pool fittings.

The advantages of the Press & Close system

- 100 % watertight, even after years
- Large opening for easy cable feed
- No threading of the cable necessary, the cable seal is only fitted after the cable has been fed in
- Easy tightening with a cordless screwdriver or Allen key
- Installation is also possible in confined spaces
- Suitable for internal threads of 1.5 inch, 2 inches, 2.5 inches and various cable diameters



Conventional underwater headlamps

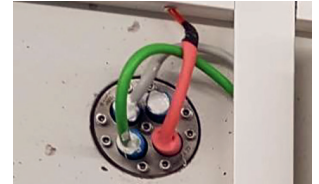


Times have changed. Modern skimmers make it possible to fill a swimming pool almost to the edge. Many customers also have swimming pools with overflow channels. The underwater headlamps commonly used to date are not always equipped for these new challenges. The following problems arise:

1. As you know, the electrical conduits for the underwater headlamps in a swimming pool must be above the waterline. This prevents water from entering the cellar via the electrical conduit. However, this is difficult when the water level is high or in swimming pools with overflow channels - the electrical conduits may lie in the water in some cases.
2. If the electrical conduit is to lie above a high waterline, it must form a tight loop. The small radius in turn makes it difficult to feed in cables.
3. Cable glands are not permanently sealed, causing pool water to flow into the electrical conduit.
4. Conventional underwater headlamps have a tube casing for connecting the electrical conduit. The electrical conduit is connected to the tube casing using a sleeve and clamp. However, this connection is not completely tight in most cases. Water escapes and can leak behind the seal or damage the reinforcement.

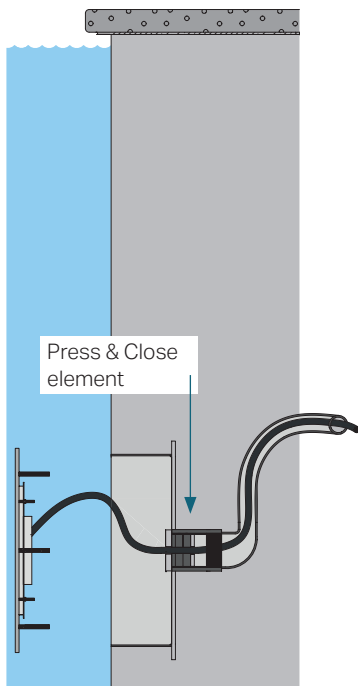


Loop with narrow radius



Water ingress in the plant room

LUXSA® headlamps with Press & Close system



A second Press & Close element can be attached to the end of the flexible hose for additional safety.



Thanks to the Press & Close system, the electrical conduit no longer has to run above the waterline. This makes it easier to insert and pull in the cable.



Connection with watertight PVC flexible hose.



Connection with electrical conduit.

LUXSA® Swimming Pool Fittings
 Gewerbestrasse 17
 8737 Gommiswald
 Phone 055 280 13 54
www.luxsa.ch
info@luxsa.ch

🇨🇭 Developed and manufactured in Switzerland.