



Patented
Patent number
17 758 631.0

LUXSA®

Schwimmbad Armaturen



Installation of a LUXSA® inlet nozzle in an existing pool

Initial situation

New inlet nozzles are to be fitted at an existing pool. The old covers no longer look nice and are mounted at a slight angle to the pool. In addition, the nozzles protrude from the pool wall.

Problem

The old thread on the pool wall feed-through is in very poor condition. The standard nozzle with external thread can only be fitted with a great deal of physical effort and time. As the pool wall feed-through is set in concrete at a slight angle, the nozzle will always be at a slight angle to the pool panels and will protrude.

Solution

The nozzle base element from LUXSA® with the patented Press & Fix system is simply inserted into the pool wall feed-through with the internal thread* and then the 4 screws are tightened and that's it. The Press & Fix system provides a 100 % seal to the poolwall feed-through and can withstand a pressure of 5 bar. The nozzle cover is attached to the base element and can be aligned in a straight line.

* The Press & Fix system also works with a smooth surface, e.g. PVC piping.

The Press & Fix system is available for nozzles, floor nozzles, floor drains, gutter drains, suction grids, headlights, standpipes, jet nozzles, piezo buttons and much more.

The Press & Fix system can be used for a wide range of applications and is also available with a paint sealing or film welding flange.



Nozzle is at an angle in the pool wall



Nozzle base element mounted in defective thread

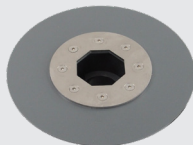


Cover can be mounted flush to the pool wall

Base elements



Floor drain



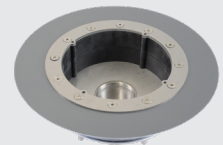
Floor drain



Nozzle

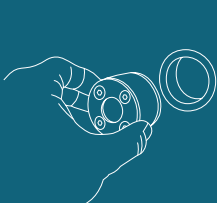


Nozzle



Headlights

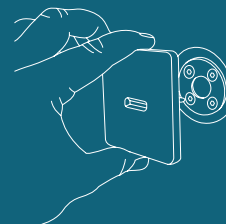
Assembly instructions for inlet nozzles



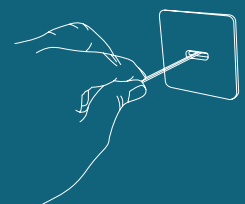
Check and clean the thread.



Set the base element flush with the surface of the pool, tighten the screws.



Check that the nozzle sleeve fits snugly into the hole in the base element, tighten screws further if necessary (max 5.5 Nm).



Screw the cover on and align it.

Installing the floor drain



1. PE pipe inserted in base plate



2. Cut off the pipe



3. Grinding a slight gradient



4. Clean the pipe



5. Set base element and tighten with spanner



6. Base elements sealed with liquid liner

Mounting the inlet nozzle



1. Stripping



2. Clean the thread



3. Mount the base element, apply additional adhesive if necessary



4. Tighten the base element



5. Base element sealed with liquid liner



6. Finished tiled pool with Q-Line nozzle cover

Mounting headlight base element with liquid liner



1. Cleaning the housing



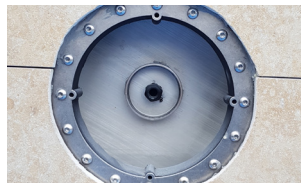
2. Place and align the base element



3. Tighten the base unit, do not install until walls have been re-profiled



4. Sealed with liquid liner



5. Clad with porcelain stoneware



6. Cable pulled in and sealed with Press & Close system

Mounting headlight for refurbishment



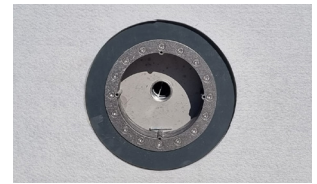
1. Core drill hole \varnothing 250 mm



2. Base element refurbishment



3. Insert base element into drill hole



4. Base element placed and ready for film installation



5. Cable pulled in and sealed with Press & Close system



6. Installation complete

LUXSA® Swimming Pool Fittings
Gewerbstrasse 17
8737 Gommiswald
Phone 055 280 13 54
www.luxsa.ch
info@luxsa.ch

Developed and manufactured in Switzerland.